

Midland Campus Plan

Board of Trustees, February 2, 2013



2012

2013

July

Aug

Sept

Oct

Nov

Dec

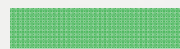
Jan

Feb

Mar

Apr

Orientation



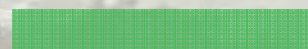
Workshop 1: Inventory



Workshop 2: Interviews



Draft Ideas



Workshop 3: Board



Draft Master Plan



Workshop 4



Master Plan Document



Schedule



Listening



Midland Culture




Context



Health & Safety
Access & Orientation
School Operations
Recruitment & Retention
Stewardship

Overall Concerns



First Impressions
Circulation
Horse Program
Stewardship
Building Conditions
Upper Yard

Focus of Plan



Lack of clear wayfinding

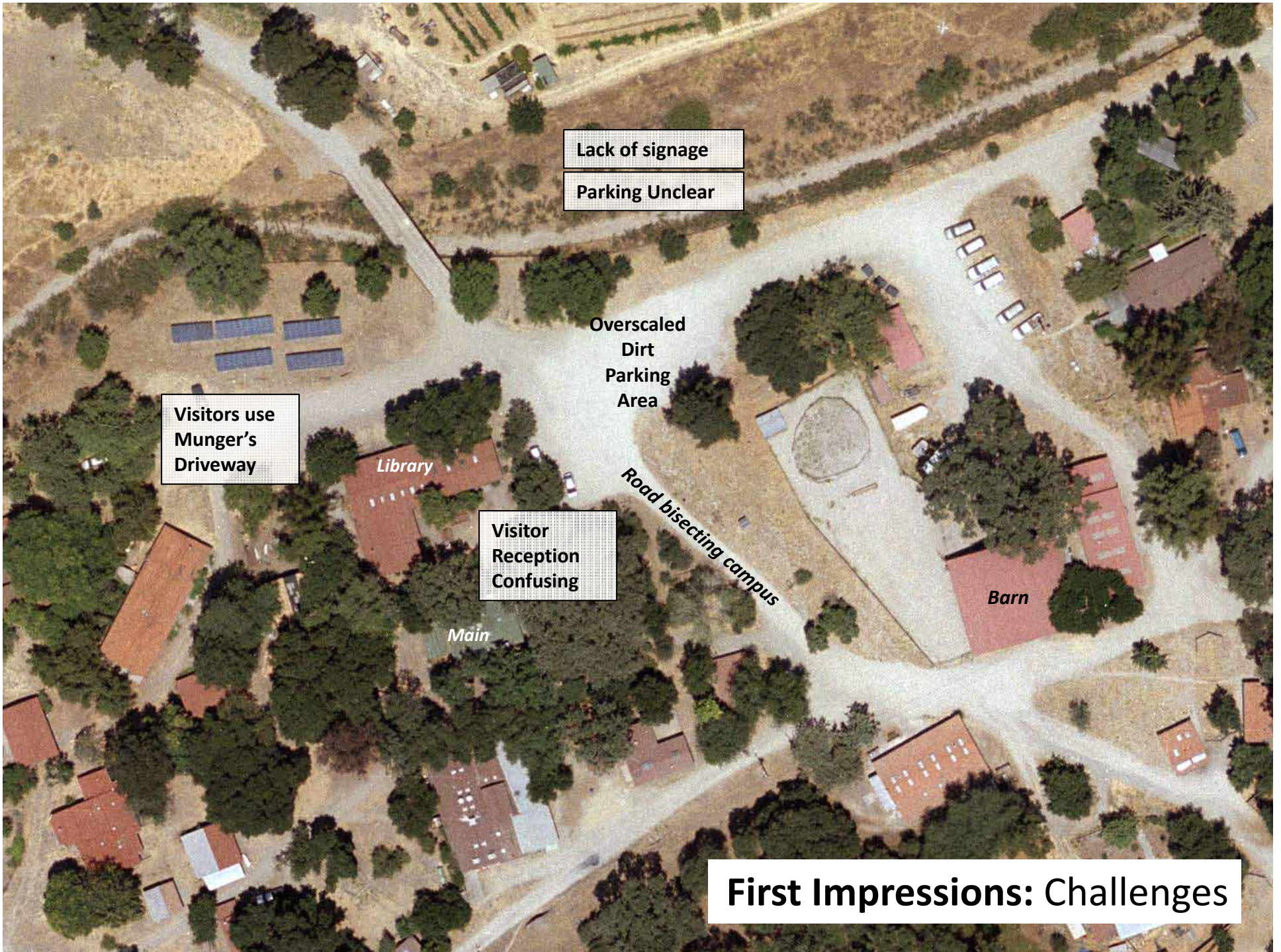


Entry parking oversized



Entry road

First Impressions



Lack of signage
Parking Unclear

Overscaled
Dirt
Parking
Area

Visitors use
Munger's
Driveway

Library

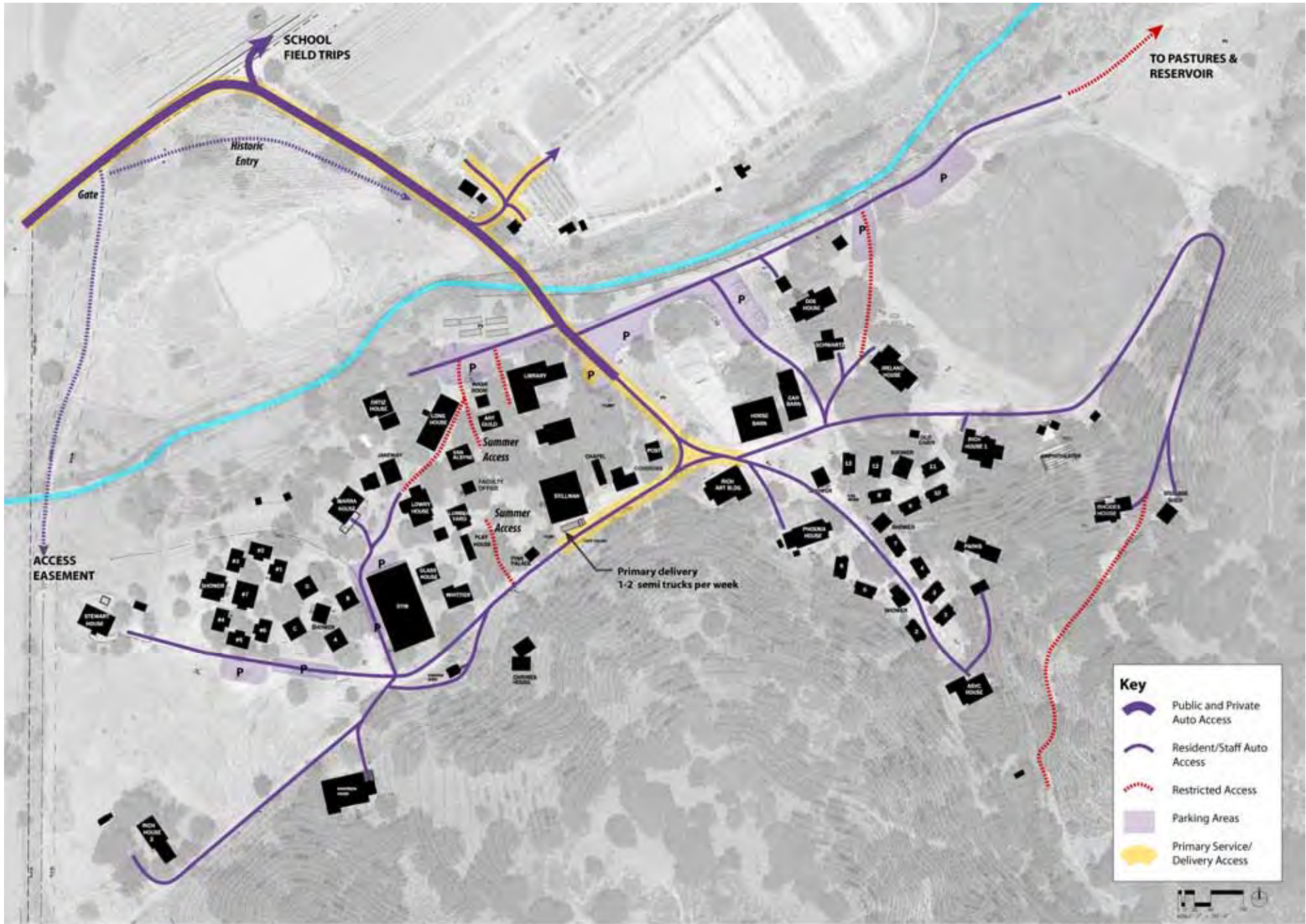
Visitor
Reception
Confusing

Road bisecting campus

Barn

Main

First Impressions: Challenges

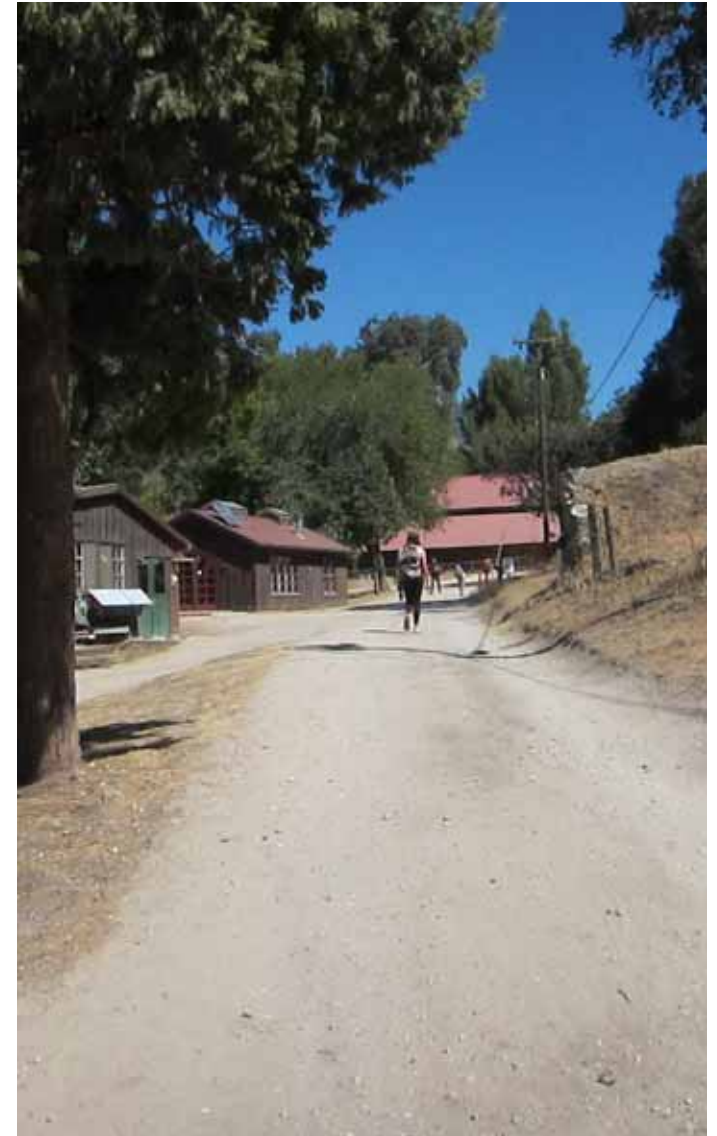




Informal roads



Undefined road edges



Dust

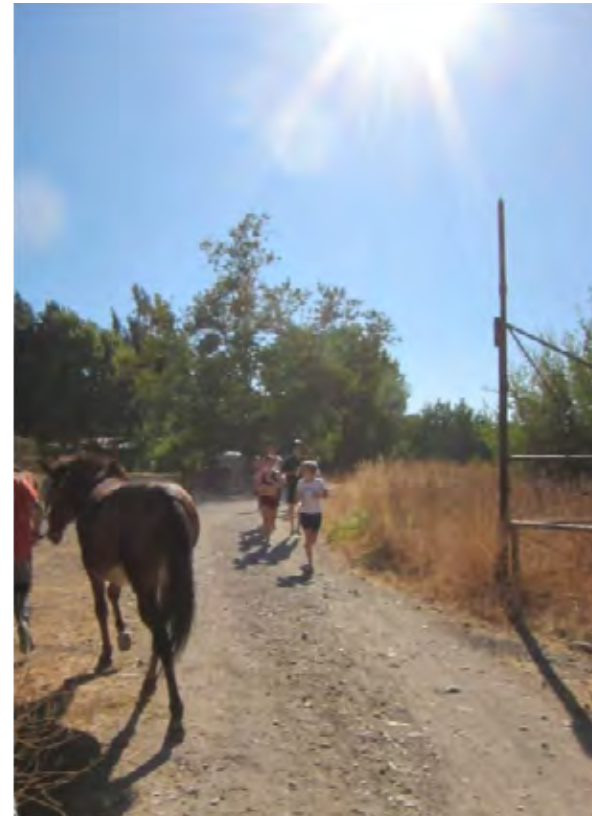


Delivery vehicle conflicts

Vehicular Circulation: Challenges



Distances/Inefficiencies



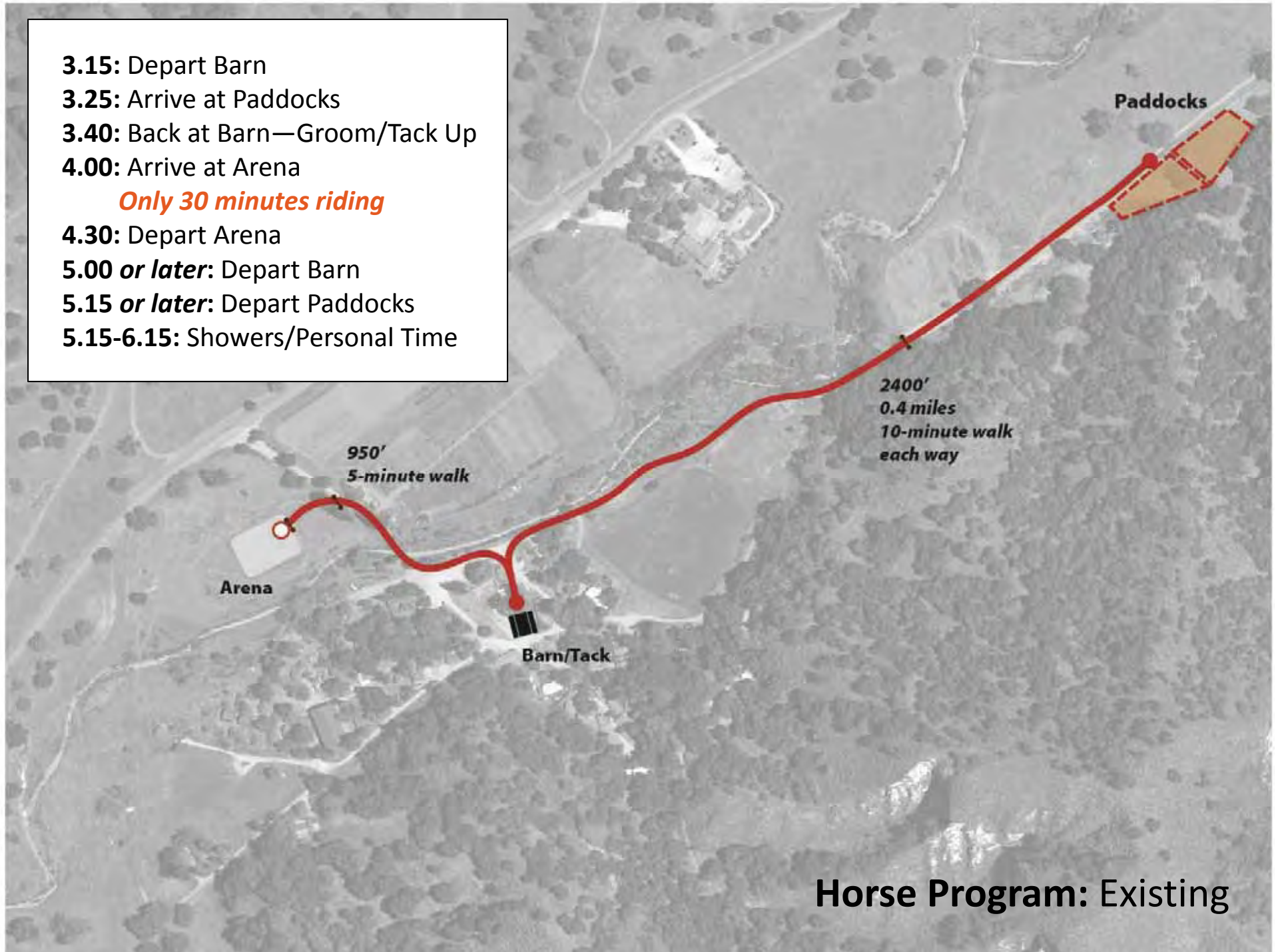
Conflicts with X-country



Conflicts with autos

Horse Program: Challenges

3.15: Depart Barn
3.25: Arrive at Paddocks
3.40: Back at Barn—Groom/Tack Up
4.00: Arrive at Arena
Only 30 minutes riding
4.30: Depart Arena
5.00 or later: Depart Barn
5.15 or later: Depart Paddocks
5.15-6.15: Showers/Personal Time



Horse Program: Existing



Creek Restoration



Water Efficiency and Supply



Renewable Energy



***Habitat Restoration/
Protection***



Green Buildings

Stewardship: Opportunities & Challenges



Stewardship: Degradation of Landscape



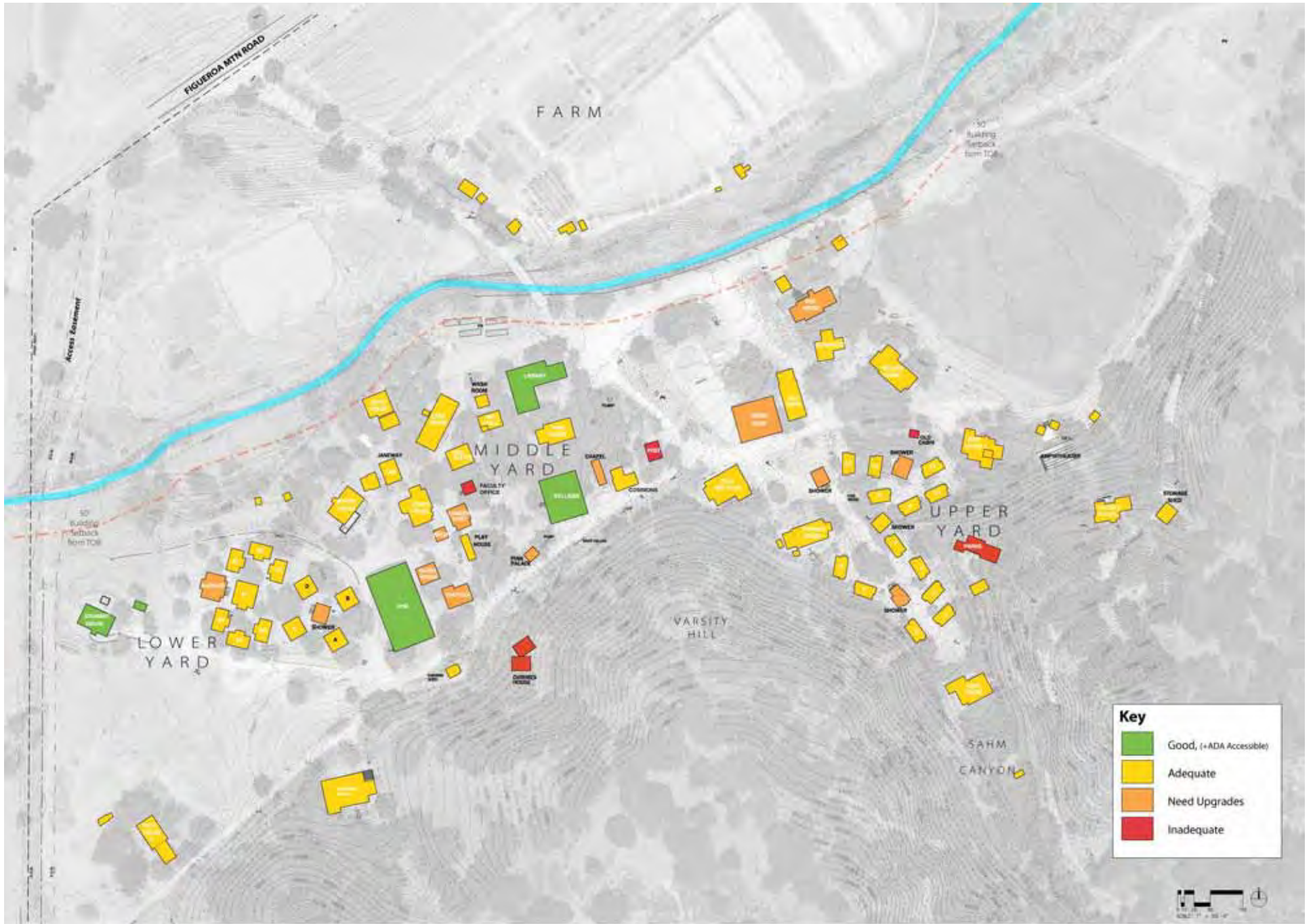
Firewood



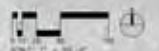
Inefficient stoves and boilers




Stewardship: Challenges



Key	
■	Good, (+ADA Accessible)
■	Adequate
■	Need Upgrades
■	Inadequate





Context-Appropriate
Close to Nature
Simple and Informal
Independent
Social

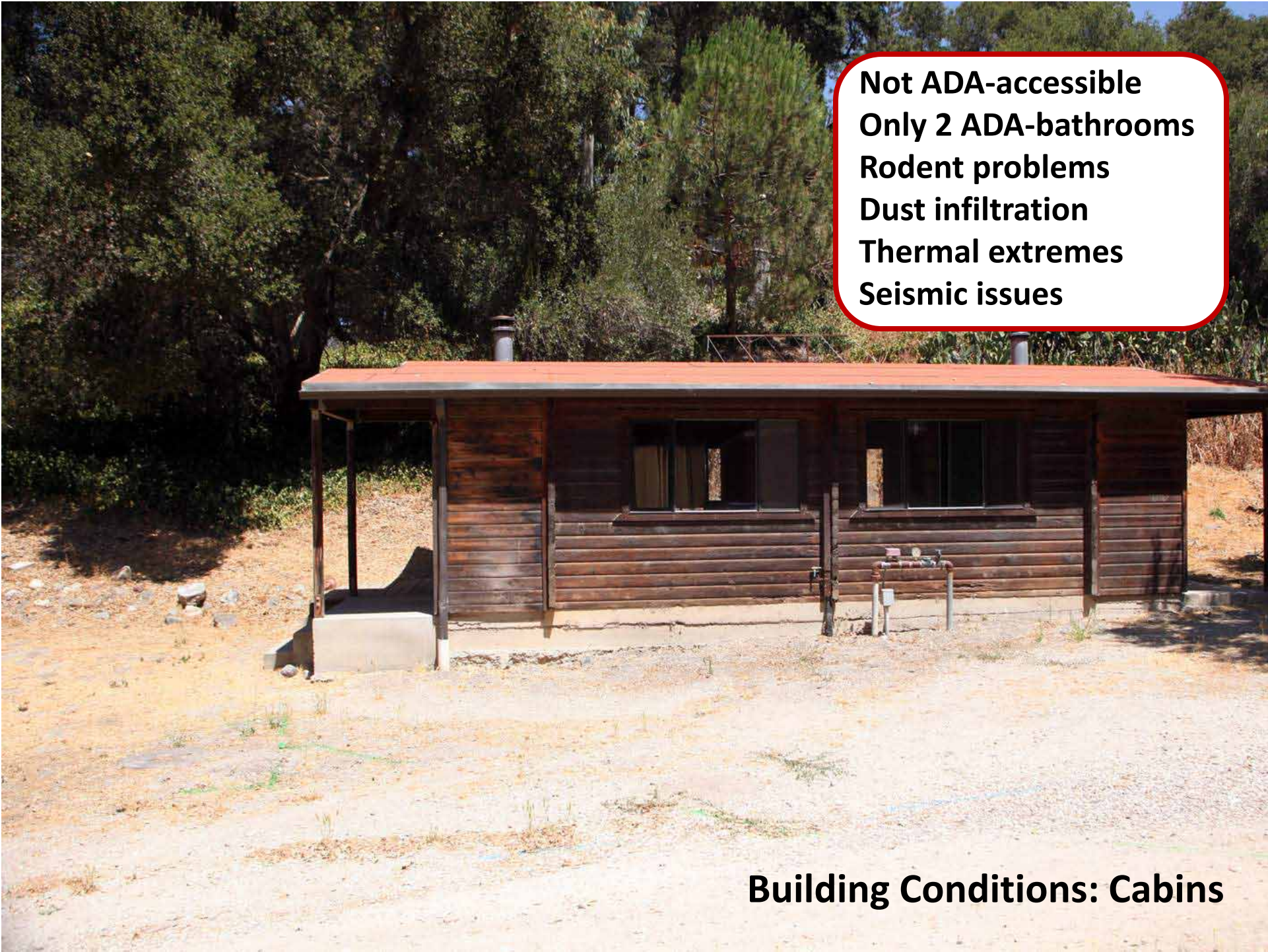
Adaptable
Low Maintenance
Low Energy Needs
Student Responsibility
Learning Opportunities

Building Positives



Noisy
Hot/Cold
Not ADA-accessible
Only 1 bathroom
Need Conference Room
Archive Storage
Better mail room
Need 50% more space

Building Conditions: Main House



**Not ADA-accessible
Only 2 ADA-bathrooms
Rodent problems
Dust infiltration
Thermal extremes
Seismic issues**

Building Conditions: Cabins



Seismic safety
Fire danger
Rodents & snakes
Thermal extremes
Inefficient

Building Conditions: Faculty Homes



Floor traction and dirt
Noisy for adjacent uses
Conflicts with weights
Open to weather
Lack of parking
Out of scale

Building Conditions: Pole Barn



Above-ground power



Erosion and flood danger

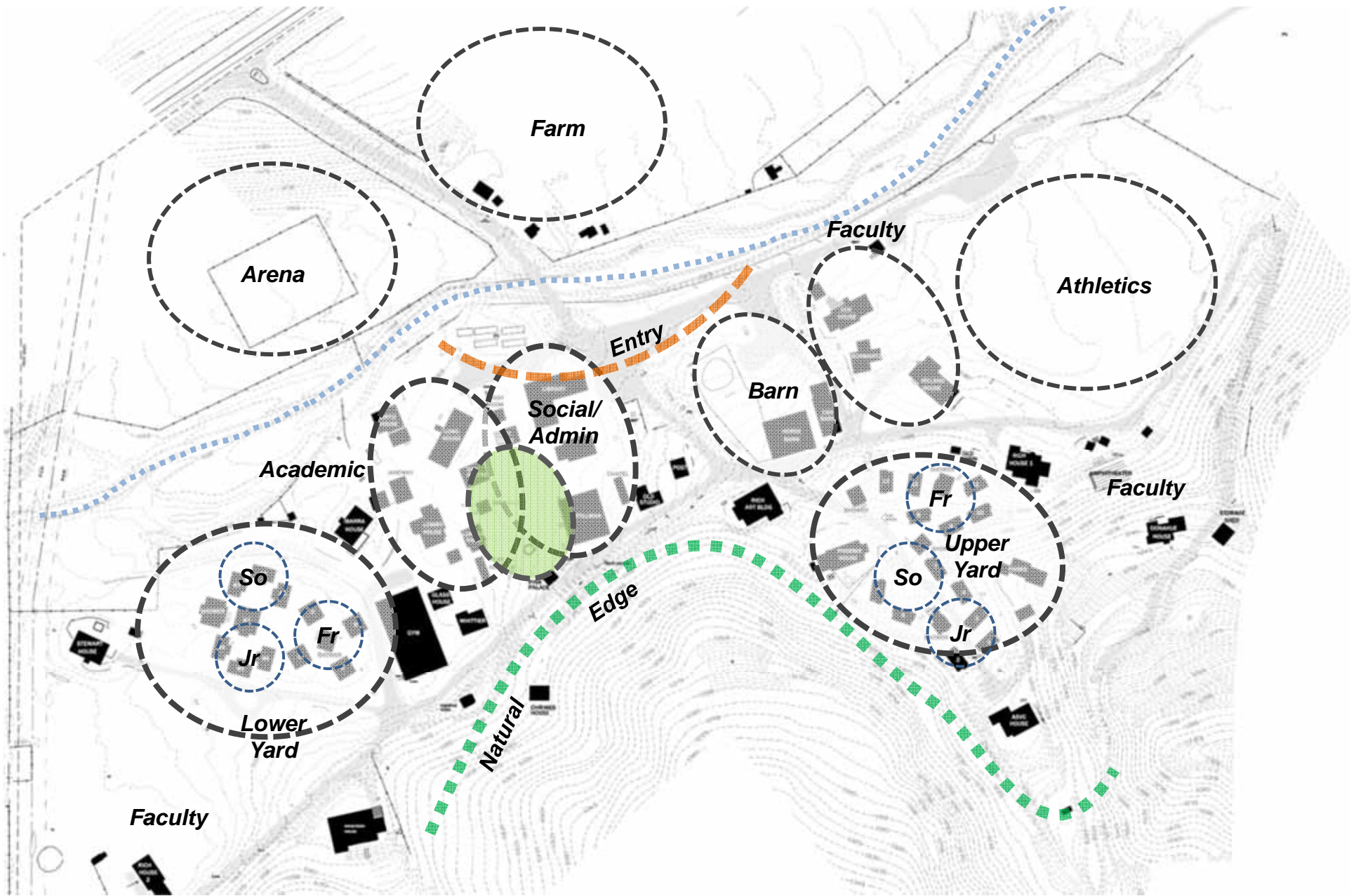


Invasives



Auto conflicts

Upper Yard Challenges



Campus Structure



First Impressions
Circulation
Horse Program
Campus Core
Stewardship
Building Conditions
Upper Yard

Focus of Plan





Entry

Athletic Fields

Core

Circulation

Pole Barn

Upper Yard



Library

Main

Barn

First Impressions

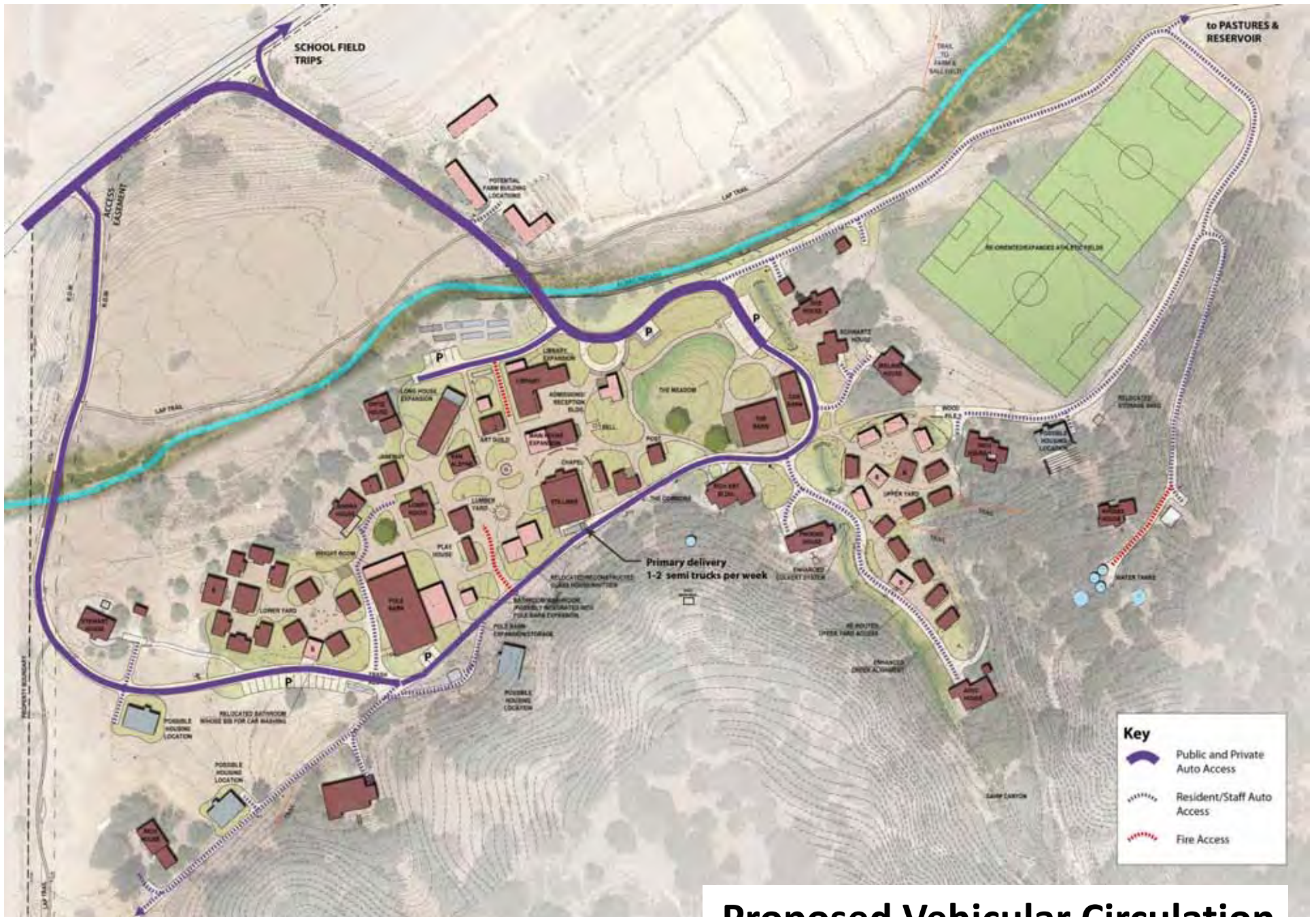




First Impressions: Now

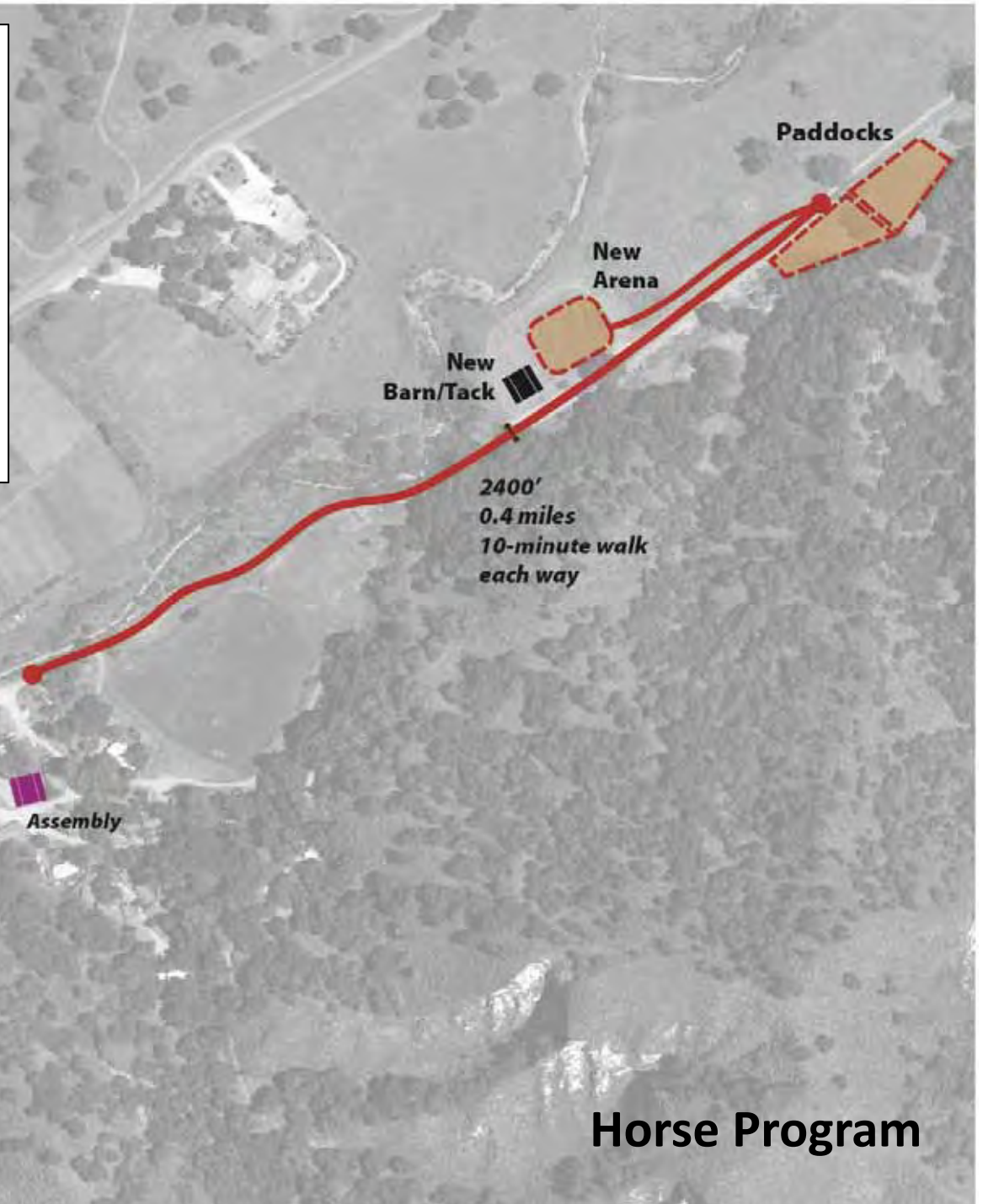


First Impressions: Proposed



Proposed Vehicular Circulation

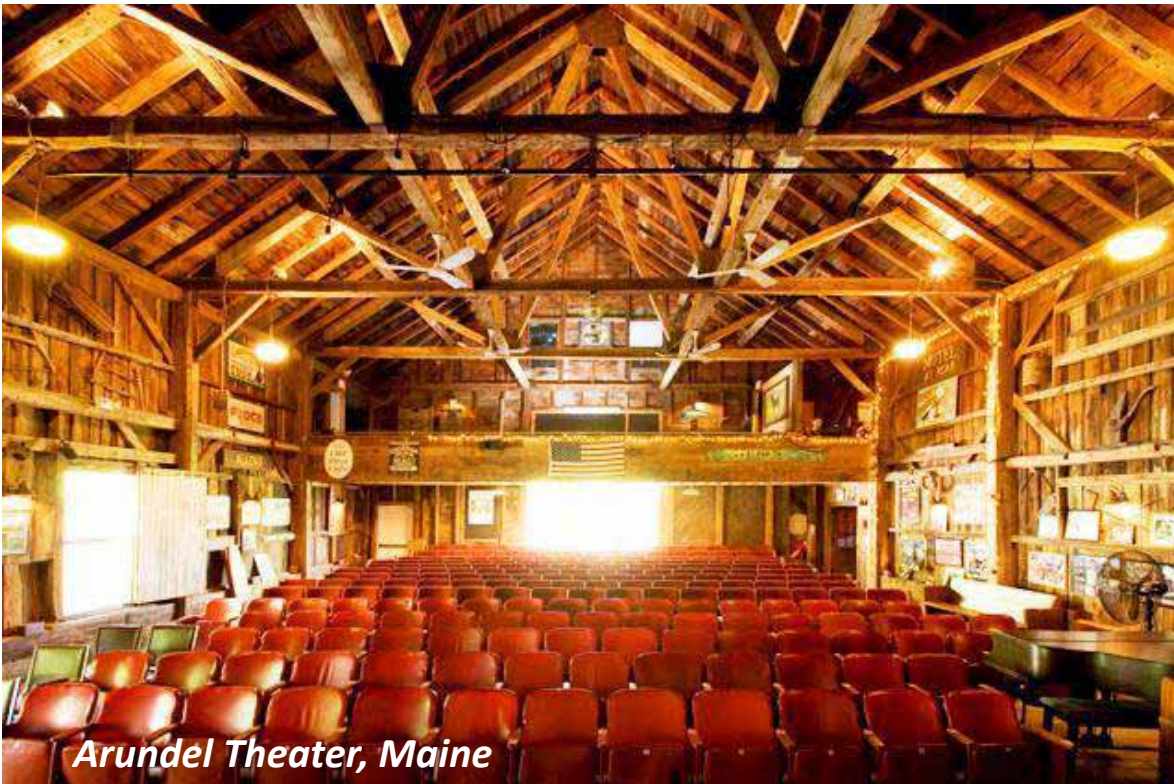
3.15: Depart School Core
3.25: Arrive at Paddocks
3.30: Arrive at Barn—Groom/Tack Up
3.45: Move to Arena
60 minutes riding
4.45: Back to Tack at Barn
5.00: Depart Barn
5.05: Depart Paddocks
5.15-6.15: Showers/Personal Time



Horse Program



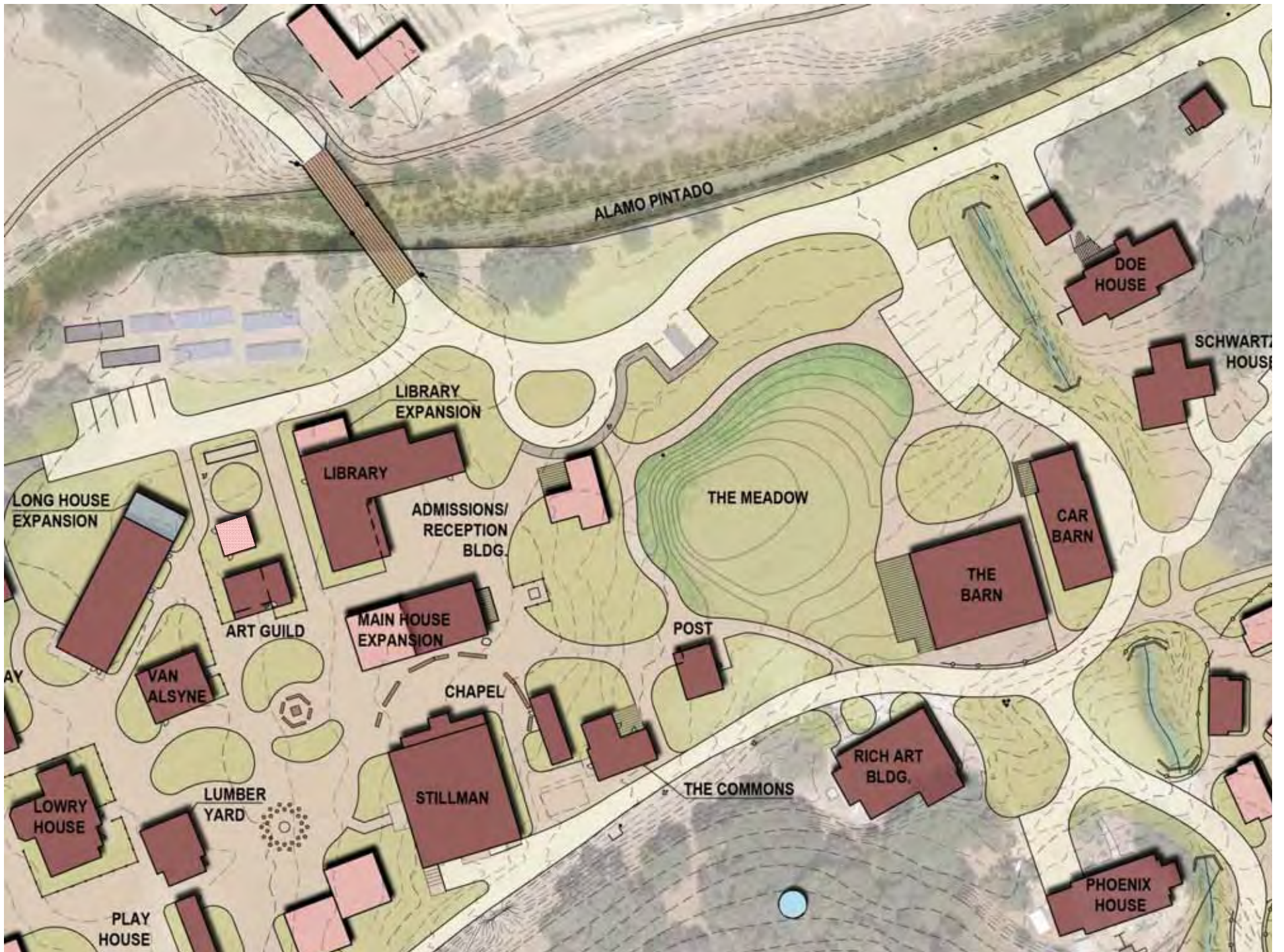
Wilsonville, OR



Arundel Theater, Maine



**Horse Program: Barn
Assembly/Performance Space**







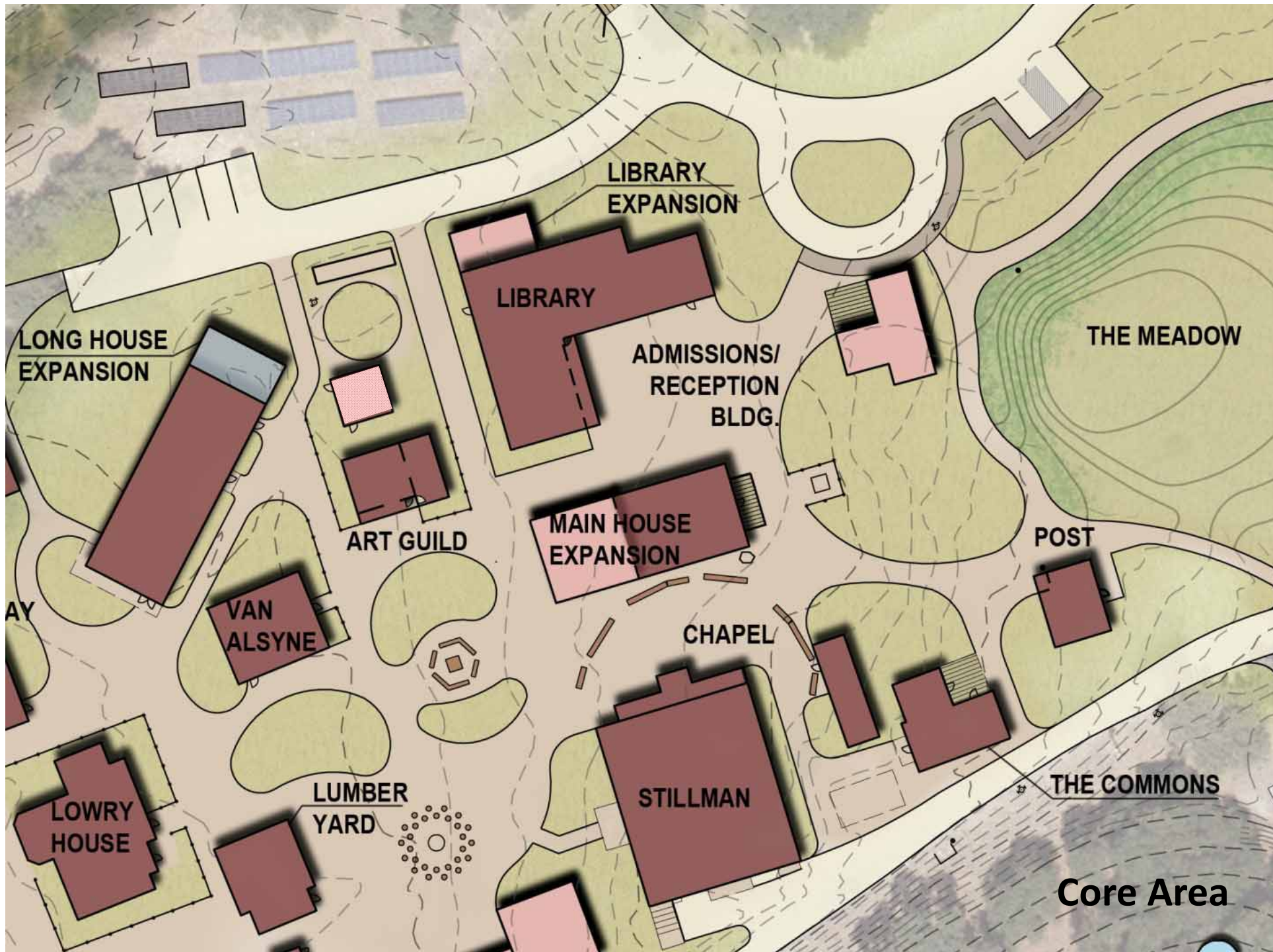
Meadow Landscape: Now



Meadow Landscape: Proposed



Meadow Landscape: Cross-Section



LIBRARY
EXPANSION

LIBRARY

ADMISSIONS/
RECEPTION
BLDG.

THE MEADOW

LONG HOUSE
EXPANSION

ART GUILD

MAIN HOUSE
EXPANSION

POST

CHAPEL

VAN
ALSYNE

STILLMAN

THE COMMONS

LUMBER
YARD

LOWRY
HOUSE

Core Area



Core Area Landscape: Now



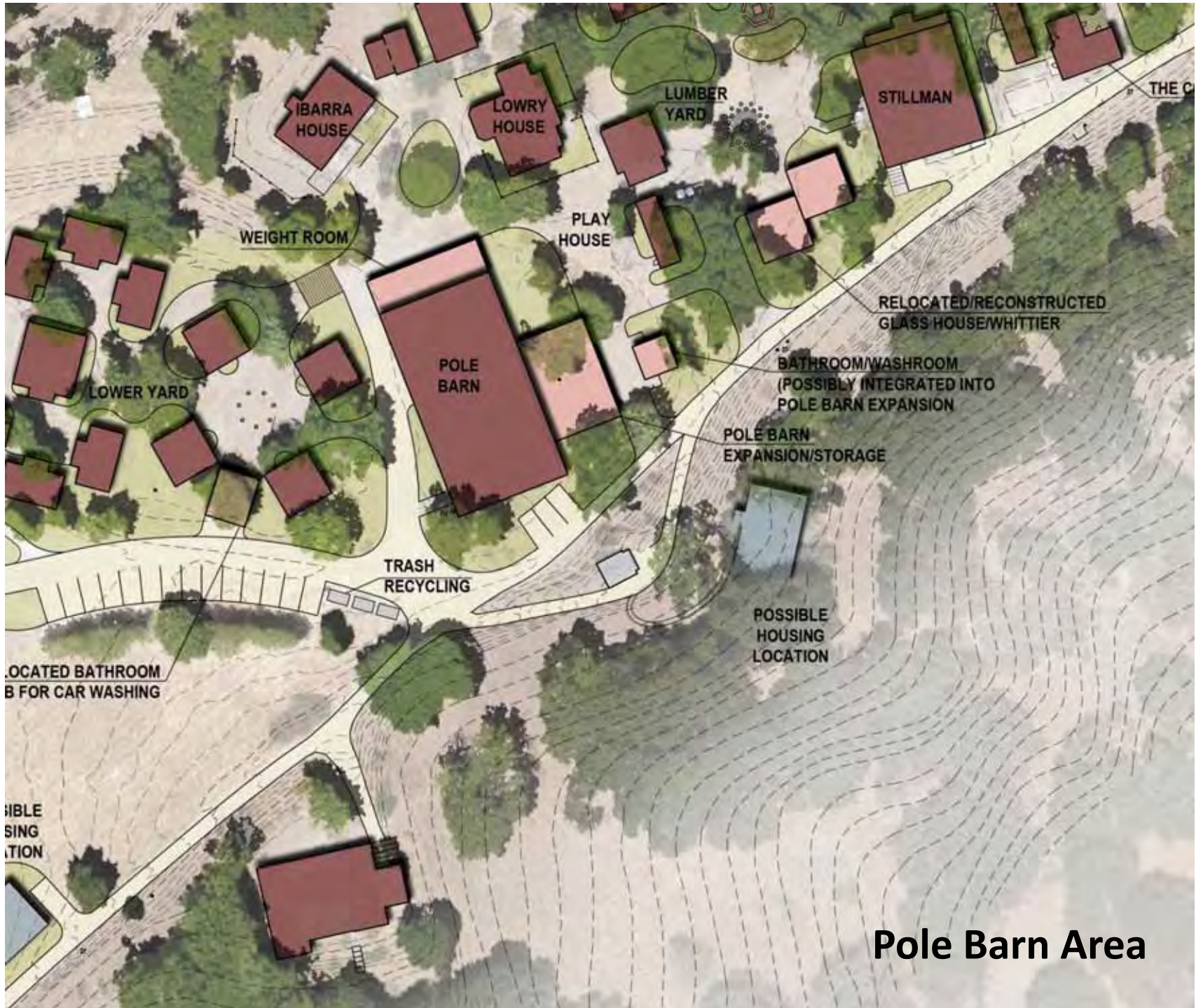
Core Area Landscape: Potential



Core Area Landscape: Now



Core Area Landscape: Potential



Pole Barn Area



Pole Barn: Now



Pole Barn: Proposed



Upper Yard: Proposed



- Upper Yard Building To Be Removed
- Upper Yard Building To Remain
- Upper Yard Building To Be Relocated
- New Building
- Other Buildings To Remain
- B** Bathroom

Upper Yard: Proposed



Upper Yard Drainage: Now



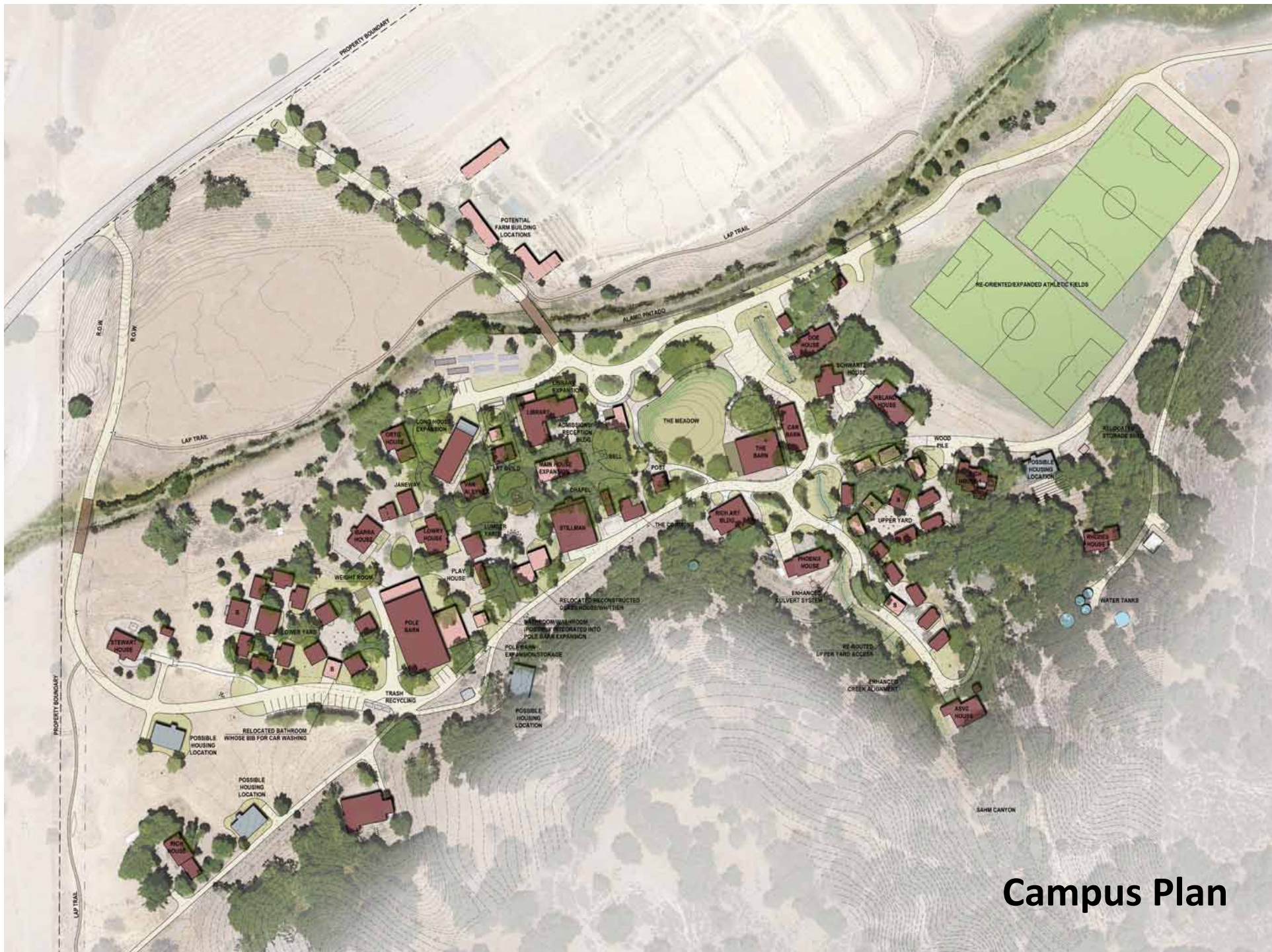
Upper Yard Drainage: Potential



Athletic Fields



Possible Faculty Home Sites



Campus Plan

Discussion



Fundraising Packages

Horse Program Reorganization

Core Circulation Improvements

Barn Renovation

New Administrative Facilities

Core Area Native Revegetation and Drainage

New Faculty Homes

Renovate Upper Yard

New Secondary Entry Drive

Pole Barn Improvements

Athletic Fields

Farm Improvements

General Campus Infrastructure

Regulatory Approvals



Midland Campus Plan

Board of Trustees, February 2, 2013

